



# Indiana Uplands Winter Food Conference

## Ohio Farm to School Partnerships

2/12/2020

APPALACHIAN CENTER FOR ECONOMIC  
NETWORKS



# Overview & Partners

A collaborative project to accelerate the distribution of local foods into Ohio communities by strengthening access, production, and consumption components of a local food value chain, creating availability to healthy food for all Appalachian communities



**Rural Action**



2/12/2020

APPALACHIAN CENTER FOR ECONOMIC NETWORKS



# Partners & Funders Building Value Chains

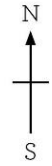






# Partners & Funders Building Value Chains

Rural Action Sustainable Agriculture  
Counties of Distribution



★ Location of the Chesterhill Produce Auction.



2/12/2020

APPALACHIAN CENTER FOR ECONOMIC NETWORKS





# Partners & Funders Building Value Chains



2/12/2020

APPALACHIAN CENTER FOR ECONOMIC NETWORKS





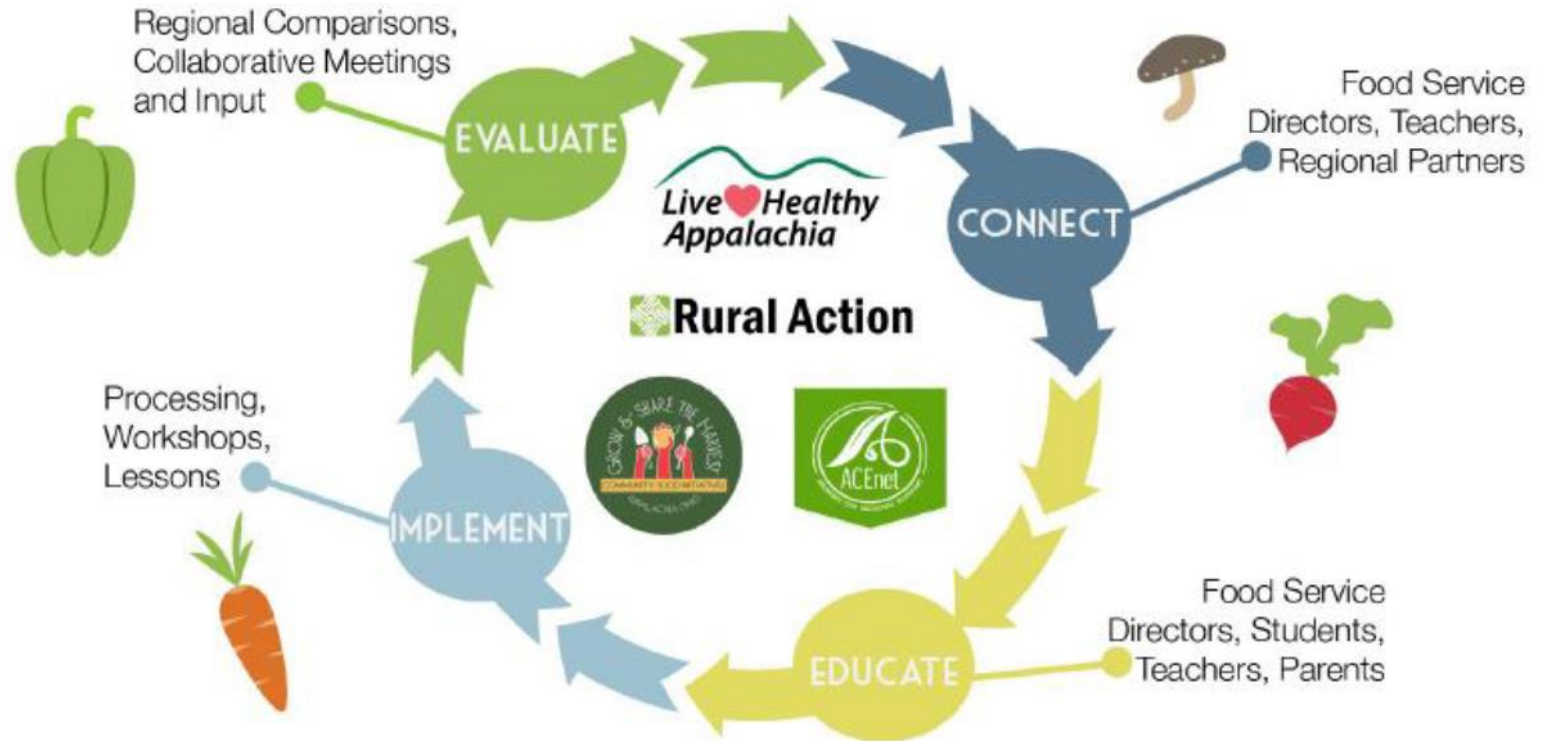
# Partners & Funders Building Value Chains





# Farm To School Partners

- Rural Action
- ACEnet
- Chesterhill Produce Auction
- SEO Foodbank
- Hocking College
- Tri-county Joint Vocational
- HAPCAP



## Building a Local Food Value Chain





# Value Chain: Capturing the Bigger Picture



## Relationships built on shared values and goals

### 1. Farm

--Farmer meetings

Communicating school needs to farmers, to sustain our local food availability

### 2. Institution

--Processing days

Cultivating skills for food preparation, to encourage exploration of the local food system

### 3. School

--Deliveries, technical assistance, education and training, support

Investing in the health and wellness of students, to encourage healthy choices





# Objective 1: Provide workforce development for processing of local foods

- Community volunteers assist annually with processing
- Recruited four youth through Ohio Jobs and Family Services CCMEP Program to assist with FTS processing
- Hired a processing coordinator





# Objective 2: Connect K-12 food service, share best practices, provide training, assess needs



- Knife skills trainings
- Education on Live Healthy Kids, School Gardens, local procurement
- 4 round tables for schools to provide feedback

2/12/2020

APPALACHIAN CENTER FOR ECONOMIC NETWORKS





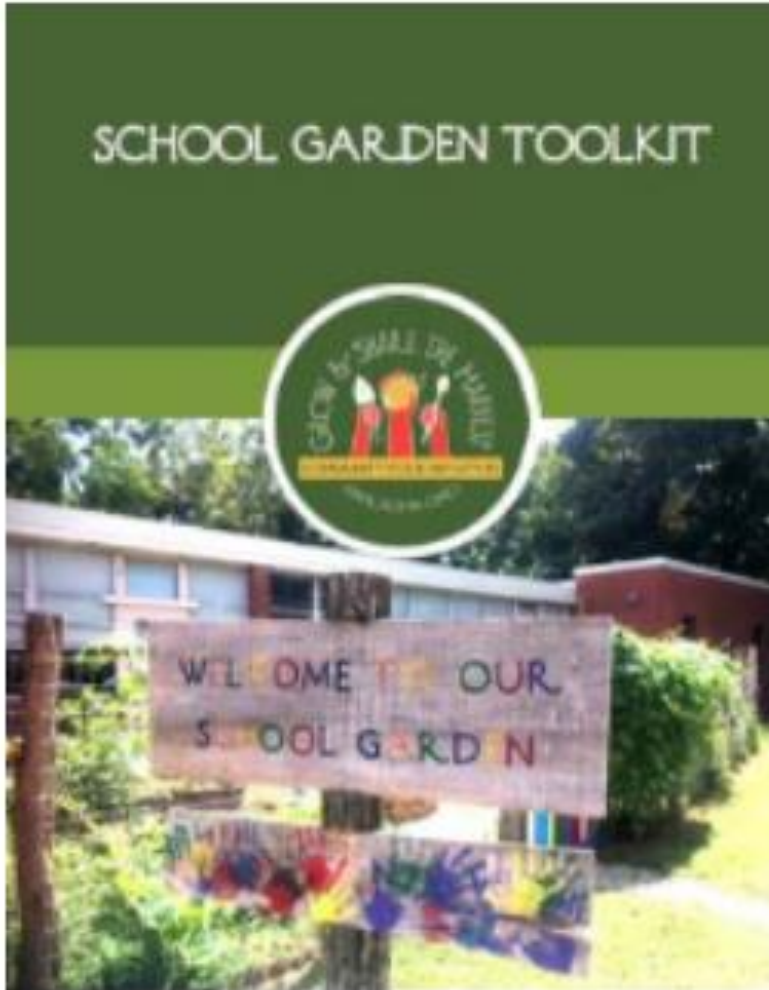
# Objective 3: Increase student knowledge and consumption



- Live Healthy Kids lessons updated to focus on local food systems
- Increased purchase of local foods for LHK lessons
- School Day at the CPA
- Apple Crunch Day



# Objective 4: Support implementation of school gardens



- Creation of School Garden toolkit including topics such as: readiness checklist, garden types, planting, harvesting, composting and more!
- Hands on workshop
- TA assistance for existing school gardens to implement toolkit principals
- Coming soon– downloadable curriculum!

2/12/2020





# 2018 HIGHLIGHTS



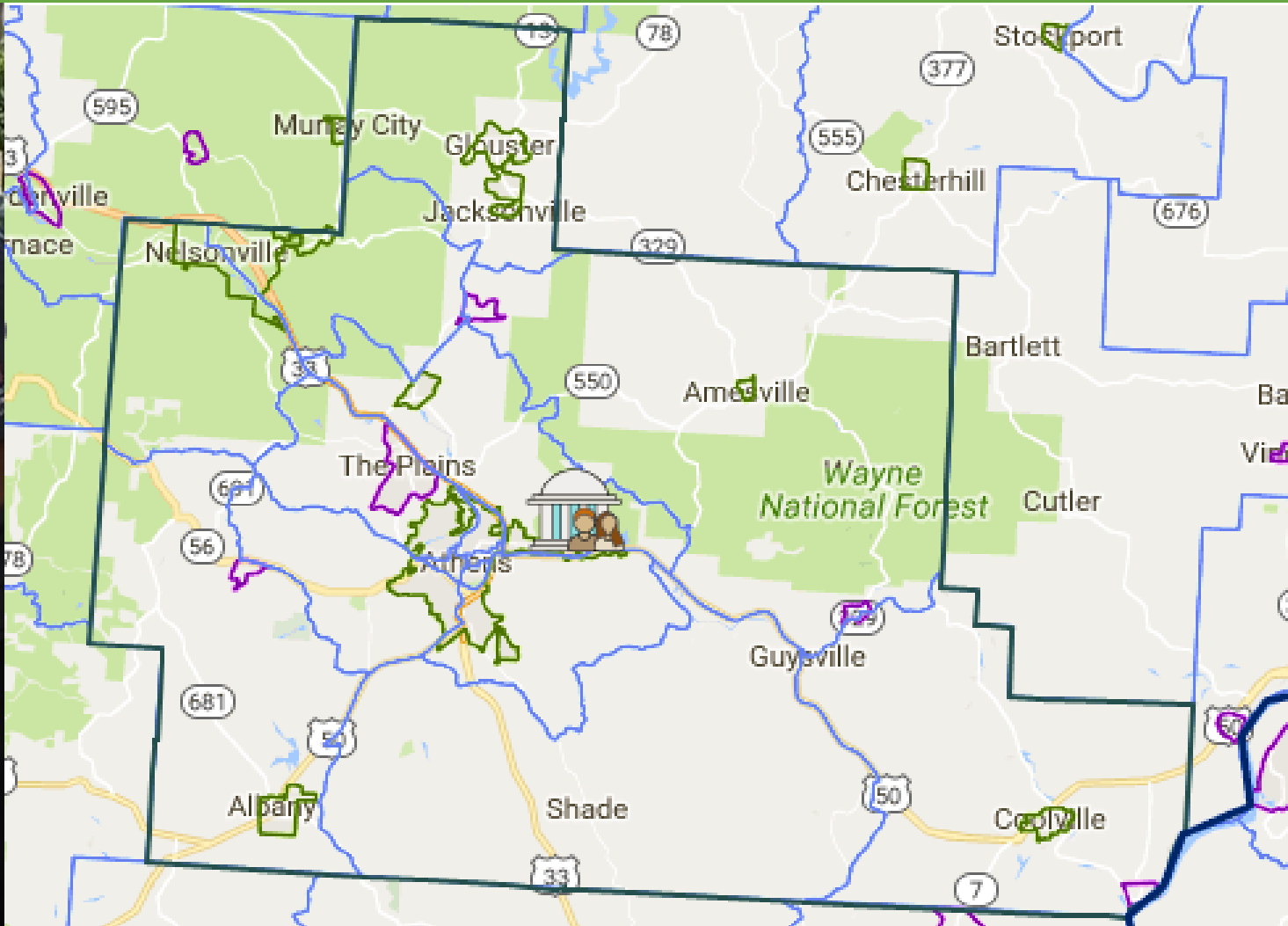
- 15,382 lbs total fresh
- 3,000 lbs frozen food processed
- 120+ volunteers
- The Sech-kar Company
- CCMEP
- Support from Athens Jobs and Family Services

2/12/2020

APPALACHIAN CENTER FOR ECONOMIC NETWORKS



# Partners in the F2S Value Chain







# Partners in the F2S Value Chain



2/12/2020

APPALACHIAN CENTER FOR ECONOMIC NETWORKS





# Partners in the F2S Value Chain



2/12/2020

APPALACHIAN CENTER FOR ECONOMIC NETWORKS





# Partners in the F2S Value Chain

## WHAT IS A VALUE CHAIN?

We believe that a successful Farm to School Program is built on a robust regional food system. Thus, our work focuses on and connects a diverse and inclusive range of stakeholders from farmer to consumer. We refer to this as a value chain, or a pipeline from farm supply to plate with growing production of a shared core value.

- Local Distribution:** Market expansion that meets health and food needs for all, inclusive of those making, experiencing or using local produce and ingredients.
- Local Production:** Equitable pay across the food system, economically necessary to feed before and after.
- Local Education:** Food and nutrition learning, education, and training to build a resilient food system.

"Simple Local Schools was pleased to participate in the Farm to School program this year. We loved being able to provide our students with good healthy fruit and vegetables from the local farmers and our students enjoyed getting some produce they normally did not get on a regular basis such as the watermelon which was one of their favorites, peas, apples and fresh tomatoes that we received on Burger days and several other items. The Farm to School staff was such a pleasure to work with and always went above to meet our needs. So thank you for all your hard work and dedication and I look forward to working with you in the upcoming year!"

—Alice Jo Lane, Foodservice Director  
Simple Local School District

"Farm education-School means opportunity. Economic opportunity for the farmer with an expansion of their business, an opportunity for country students of the secondary and post-secondary level to experience working with fresh, local, and mostly organic produce, and an opportunity for the schools to provide that produce to their students as part of the school lunch program."

—Drew Ruppel, Executive Director  
Culinary Arts Instructor  
Tri-County Career Center & Hocking College

## WORKING WITH GROWERS

We work with 128 growers at the Chester Hill Produce Auction, who sell local and seasonal produce to school districts with the support of the community. With farmers as the backbone of our local food system, the health of our community depends on their success. We see farmers not only as a source of local produce, but also as a source of the inspiration of our program and to our local school children. We regularly communicate with these local growers regarding the market demand of local schools and giving them the opportunity to grow regional and fresh food. We also support them in the growth of their success by offering training in a sustainable farming system to address local opportunities. This investment in education is seen as a way to set a value in our decision making process, but also community ownership, and supports a more sustainable food system.



## Farm to School: Survey Results



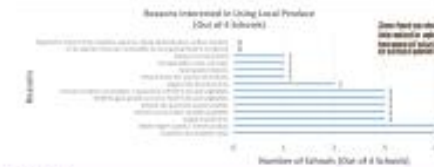
Rural Action

## Farm to School: Survey Results



Rural Action

## Farm to School: Survey Results



Rural Action

## HISTORY OF FARM TO SCHOOL IN APPALACHIA OHIO

Our program includes an intermediary step to process and distribute local food to K-12 districts. This step takes place at Hocking College and the Southeast Ohio Regional Kitchen. This program has existed over the past 12 years:

2004

First Action grants received from USFWS

2010

First program with Hocking College Gateway District begins to process local foods for K-12 districts

2014

First Action receives funding for pilot Farm to School program

2015

First Action receives funding from USDA Farm to School Support Grant to expand program to six school districts

2016

First Action enters Regional Farm to School Collaborative

2017

Partnership with Southeast Ohio Regional Kitchen and MAPOL Learn and Work program for growth of processing of local foods for local K-12 districts

2018

Partner with Adams County Creating Healthy Communities to create healthy diets to support implementation of Farm to School in cantonville

In Partnership With:

